

Clarke®



Only suitable for well insulated areas and not designed
to be the primary heat source

400V ELECTRIC FAN HEATER

MODEL NO: DEVIL 5000PTC

PART NO: 6925340

OPERATION & MAINTENANCE INSTRUCTIONS

UK
CA | CE



ORIGINAL INSTRUCTIONS

DL0526 Rev 5

INTRODUCTION

Thank you for purchasing this CLARKE product.

Before attempting to use this product, please read this manual thoroughly and follow the instructions carefully. In doing so you will ensure the safety of yourself and that of others around you, and you can look forward to your purchase giving you long and satisfactory service.

GUARANTEE

This product is guaranteed against faulty manufacture for a period of 12 months from the date of purchase. Please keep your receipt which will be required as proof of purchase.

This guarantee is invalid if the product is found to have been abused or tampered with in any way, or not used for the purpose for which it was intended.

Faulty goods should be returned to their place of purchase, no product can be returned to us without prior permission.

This guarantee does not effect your statutory rights.

FUNCTION AND OPERATING PARAMETERS

This is a forced air heater. It's intended use is for drying and the warming of commercial/industrial buildings and areas where adequate ventilation is provided.

- It must be operated as prescribed in the operating manual.
- It is **NOT** intended to be used for domestic use or for the heating of habitable areas.
- It is **NOT** intended to be used to reach and maintain a certain level of human thermal comfort within an enclosed space in which the heater is situated.
- It is **NOT** intended to be used in enclosed areas with restricted ventilation.
- It is **NOT** intended for warming animals or live stock.

THE FOLLOWING TABLE ADDRESSES THE INFORMATION REQUIREMENTS OF REG.2024/ 1103

Item	Symbol	Value	Unit
Heat output			
Nominal heat output	P_{nom}	5.000	kW
Minimum heat output (indicative)	P_{min}	3.300	kW
Maximum continuous heat output	$P_{max, c}$	5.000	kW
Auxiliary electricity consumption			
In off mode	P_o	0.000	W
In standby mode	P_{sm}	0.000	W
In idle mode	P_{idle}	0.000	W
In network standby	P_{nsm}	0.000	W
Seasonal space heating energy efficiency in active mode	$\eta_{s, on}$	85	%
Standby mode with display information or status	-	No	-
Type of heat output/room temperature control (select one)			
Single stage heat output, no temperature control			No
Two or more manual stages, no temperature control			No
With mechanical thermostat temp control			Yes
With electronic temperature control			No
Electronic temperature control with day timer			No
Electronic temperature control with week timer			No
Other control options (multiple selections possible)			
Room temperature control with presence detection			No
Room temperature control with open window detection			No
Room temperature control with distance control option			No
Room temperature control with adaptive start control			No
Room temperature control with working time limitation			No
Room temperature control with black bulb sensor			No
Room temperature control with self-learning functionality			No
Room temperature control with control accuracy			No

SAFETY SYMBOLS

The following symbols appear on the unit.

	Hot Surface, Do Not Touch	 DO NOT COVER	Do Not Cover		High Voltage
---	------------------------------	---	--------------	---	--------------

SAFETY RULES

Make sure that you read, understand and comply with the following.

ELECTRICAL SAFETY



WARNING: THIS HEATER MUST BE EARTHED

1. Electrical appliances must match the power outlet. **NEVER** modify the plug in any way. **DO NOT** use adaptor plugs with earthed (grounded) appliances. Correct plugs and outlets will reduce the risk of electric shock.
2. **DO NOT** abuse the electrical cable. **NEVER** use the cable for pulling or unplugging the heater. Keep the cable away from sources of heat, oil, sharp edges or moving parts. Damaged or tangled cables increase the risk of electric shock.
3. Keep the power cable well away from machines and ensure an adequate electrical supply is close at hand so that the operation is not restricted by the length of the cable.
4. **ALWAYS** disconnect from the power supply before moving the heater or performing any cleaning or maintenance tasks.
5. Inspect the mains cable regularly for signs of damage. **DO NOT** use if it is damaged, and **ALWAYS** keep it away from the source of heat.
6. Check the heater for damage before use. **DO NOT** use if the heater tubes/elements are damaged or broken. Any damage should be properly repaired or the part replaced. If in doubt, **DO NOT** use. Consult your local CLARKE dealer.

POSITIONING



WARNING: DO NOT USE THE HEATER NEAR FLAMMABLE MATERIAL, LIQUIDS, SOLIDS, GASES OR COMPRESSED GAS CYLINDERS ETC.

1. This heater is designed for indoor use only.
2. **DO NOT** use this heater in small rooms when they are occupied by persons not capable of leaving the room on their own unless constant supervision is provided.
3. **DO NOT** use this heater in the immediate surrounds of a bath, a shower, a swimming pool or wet surfaces.
4. **NEVER** place the heater against or near any surface such as a wall, door, curtains, furniture or combustible material etc. Allow at least 2 metre clearance.
5. **DO NOT** place the heater immediately below any electrical outlet.
6. **DO NOT** place the heater on a raised surface or anywhere where it could topple over. **ALWAYS** use on a horizontal and stable surface.
7. **ALWAYS** ensure that the grille cannot be blocked.
8. **DO NOT** operate fan heaters in explosive atmospheres such as in the presence of flammable liquids, gases or dust such as in a paint spray booth or any explosive environment. Electric motors create sparks which may ignite dust or fumes.

OPERATION

1. This heater is intended for drying & warming of commercial/industrial buildings where adequate ventilation is provided. It is **NOT** for domestic use or for heating habitable areas.
2. The heater should **NOT** be used by children or persons with reduced physical, sensory or mental capabilities, or lack of experience and knowledge.
3. **CAUTION:** Some parts of this product can become very hot and cause burns. Particular attention should be given where, animals, children and vulnerable people are present.
4. The heater must only be used by people who have read these instructions and have been trained in its use.
5. **DO NOT** use if dropped.
6. **DO NOT** use if there is visible signs of damage.
7. **DO NOT** obstruct the air inlet and outlet sections of the heater.
8. **DO NOT** cover the heater with anything that could restrict the air flow.
9. **DO NOT** touch the heater casing or grille when first switched off, as these will be very hot and will take time to cool.
10. **DO NOT** get the heater wet or use in areas of high condensation.

11. **DO NOT** allow the power lead to touch hot surfaces.
12. **DO NOT** connect other appliances to the same mains socket as the heater.
13. **DO NOT** use this heater with a programmable timer used to switch it on automatically.
14. **DO NOT** leave the heater unattended.

SERVICE & REPAIRS

1. If necessary, have your heater repaired by a qualified person using identical replacement parts. This will ensure that the safety of the product is maintained.
2. Please keep these instructions in a safe place for future reference.

ENVIRONMENTAL RECYCLING POLICY



Through purchase of this product, the customer is taking on the obligation to deal with the WEEE in accordance with the WEEE regulations in relation to the treatment, recycling & recovery and environmentally sound disposal of the WEEE.

In effect, this means that this product must not be disposed of with general household waste. It must be disposed of according to the laws governing Waste Electrical and Electronic Equipment (WEEE) at a recognised disposal facility.

SPECIFICATIONS

Operating Voltage and Frequency:	400 V / 50Hz / 3 Phase
Operating Temperature: (Min/Max)	-15 to +25°C
Max Heat Output:	5 kW - 17060 BTU/HR
Air Output:	588m ³ /h
Safety Device:	Thermal cut-out
Duty Cycle Classification:	Continuous duty
Electrical Insulation Class	I
Ingress protection	IP20
Product: Depth x Width x Height	300 x 235 x 345 mm
Product Weight	4.32 kg

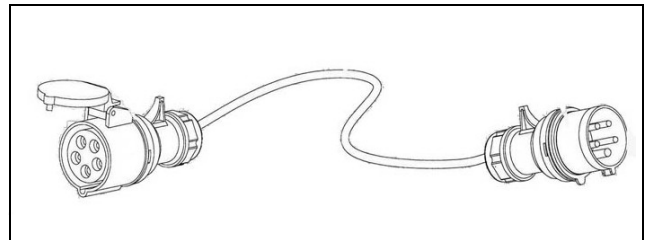
ELECTRICAL CONNECTIONS



WARNING: THE INSTALLATION OF THIS APPLIANCE SHOULD BE CARRIED OUT BY A COMPETENT ELECTRICIAN AND BE IN ACCORDANCE WITH THE CURRENT IEE WIRING REGULATIONS (BS7671-2:2008).

This heater **MUST** be connected to a 400 Volt, 3 phase 50Hz supply through a suitably rated isolator switch. It cannot be operated from a single phase supply.

In addition to the cable fitted to the heater, a DCL16B extension lead can be used. This is fitted with a red 5 pin 16 amp industrial plug to EN 60309 with 16A socket. (CLARKE part No 6925233).



If in any doubt, consult a qualified electrician. **DO NOT** attempt any electrical repairs yourself.

OPERATION

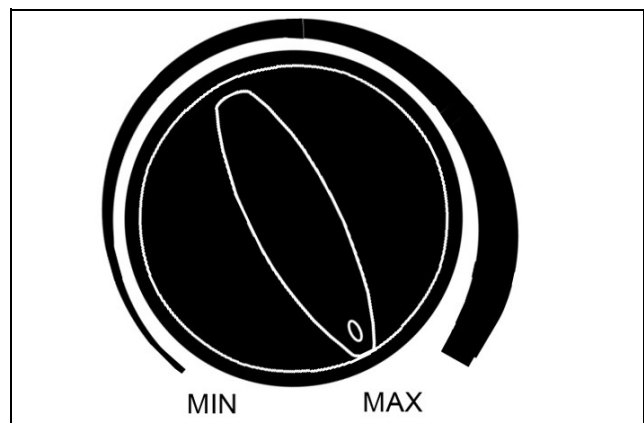


WARNING: DO NOT USE THIS HEATER IN SMALL ROOMS WHEN THEY ARE OCCUPIED BY PERSONS NOT CAPABLE OF LEAVING THE ROOM ON THEIR OWN, UNLESS CONSTANT SUPERVISION IS PROVIDED.






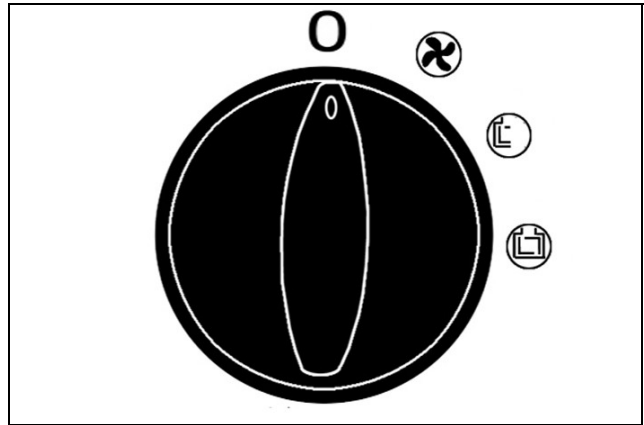
CAUTION: SOME PARTS OF THIS PRODUCT CAN BECOME VERY HOT AND CAN CAUSE BURNS. PARTICULAR ATTENTION HAS TO BE GIVEN WHERE CHILDREN AND VULNERABLE PEOPLE ARE PRESENT.

1. Put the heater in a level position on a flat surface and at a safe distance from flammable materials. Keep a minimum of 2m clearance all round.
2. Connect the heater to a suitable power supply.
3. Set the thermostat control to the maximum setting (fully clockwise).

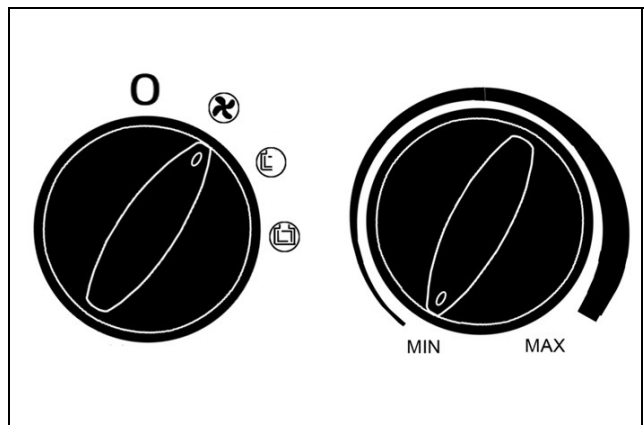


4. Set the mode selector to one of the 3 settings:

0	Off
	Fan Only
	Heat Setting 1
	Heat Setting 2



- The heater will take up to three minutes to reach optimum temperature.
5. Once the room reaches the required temperature, turn the thermostat control slowly counter-clockwise until the thermostat clicks, leave the control in this position.
- The room temperature will be maintained at this setting. The heater will continue to operate until the power switch is turned to the OFF position.
6. For fan only operation, turn the power switch to the fan only setting and set the thermostat to its minimum setting.



7. Adjust the angle by loosening both adjusting knobs and setting the required angle.
8. Re-tighten the adjusting knobs.
9. When not in use, disconnect the heater from the mains supply. Store it in a safe, dry, childproof location.



TROUBLE SHOOTING

Problem	Possible Cause	Remedy
Heater does not operate, although plugged in with the switch and thermostat switched on.	Plug is loose/bad connection.	Pull the plug out & check all connections (cable/plug and socket).
	Fuse blown or circuit breaker trips.	Replace if necessary and investigate cause. If fuse blows repeatedly, consult your CLARKE dealer.
	No power at socket outlet	Insert the plug in a suitable socket.
Heating element glowing hot.	Input voltage too high.	Use a power supply in accordance with the rating on the label.
	Air inlet grille is blocked.	Ensure the heater is kept away from any objects which could cover the air inlet or be drawn into it.
The unit has failed to heat up so only the air fan has operated.	Control switch not set at a 'HEATING' level.	Turn switch to a heating level.
	Thermostat has tripped.	Turn the thermostat and listen. If there is no CLICK and the thermostat is not damaged, the heater will automatically switch ON when it has cooled down.
Abnormal noise.	Heater is not level.	Stand heater on a level surface.

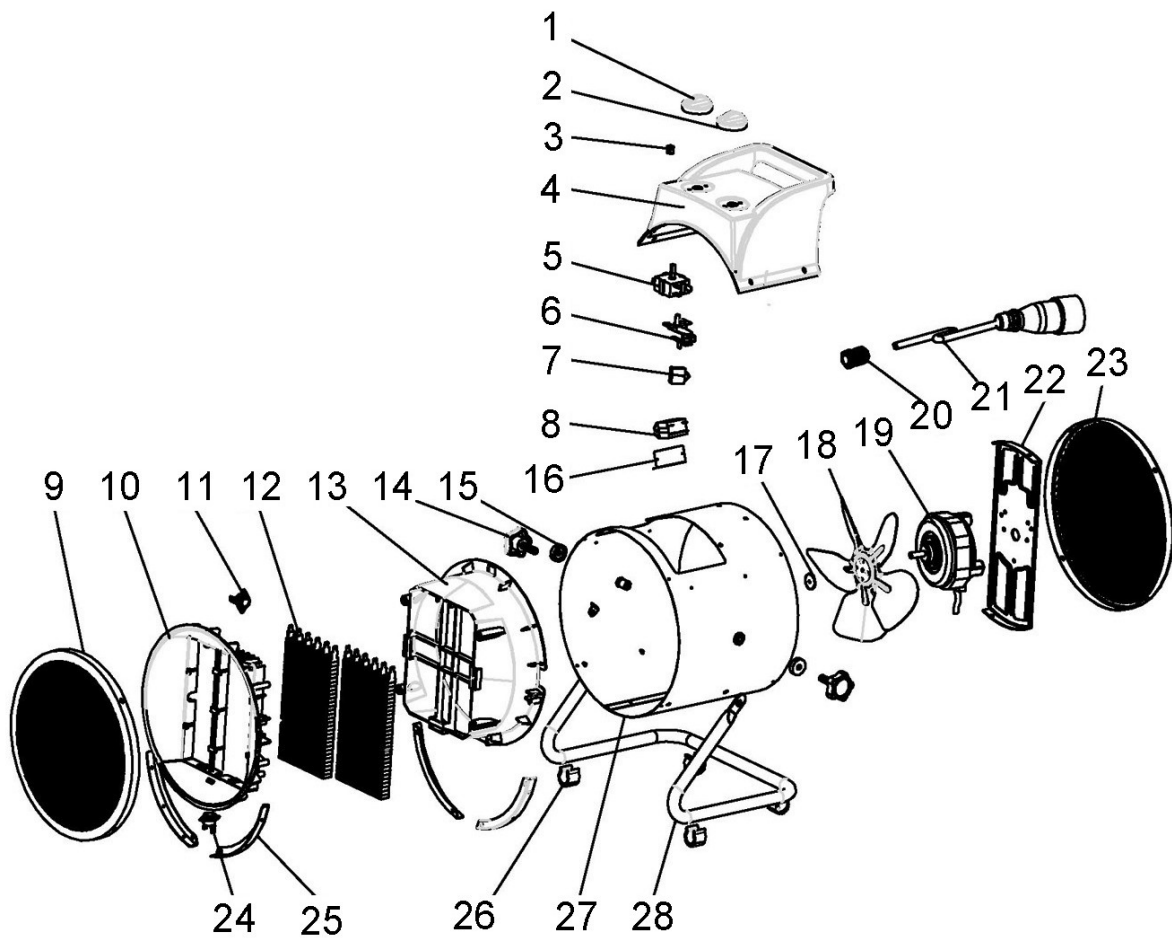
MAINTENANCE



WARNING: ALWAYS DISCONNECT FROM THE POWER SUPPLY AND ALLOW THE HEATER IT TO COOL DOWN BEFORE PERFORMING ANY MAINTENANCE TASKS.

1. Clean the heater with a soft damp cloth. **DO NOT** use solvents or abrasives.
2. **DO NOT** allow the heating elements to become covered with dust which could become a fire hazard. If used in a dusty workplace it should be cleaned as described under Cleaning and Maintenance.
3. Only recommended parts should be used. Unapproved parts may be dangerous and will invalidate the warranty.
4. **DO NOT** attempt to repair a damaged heater, contact the Clarke service department.

COMPONENT PARTS



1	Setting knob
2	Thermostat control knob
3	Lamp cover
4	Control box cover
5	Switch
6	Thermostat
7	Capacitor
8	Relay
9	Front grille
10	Air outlet
11	Temperature controller
12	Heating element
13	Air duct
14	Adjusting knob

15	Friction pad
16	Relay support
17	Blade fastening
18	Fan
19	Motor
20	Cable clamp
21	Power cable/plug
22	Motor bracket
23	Rear grille
24	Temperature sensor
25	Surround
26	Foot pad
27	Housing
28	Frame

DECLARATION OF CONFORMITY

UKCA

Clarke
INTERNATIONAL
Hemnal Street, Epping, Essex, CM1 6 4LG

DECLARATION OF CONFORMITY

This is an important document and should be retained.

We hereby declare that this product(s) complies with the following legislation:

2009/125/EC Ecodesign Directive
2014/30/EU Electromagnetic Compatibility Directive
2014/35/EU Low Voltage Directive
2011/65/EU Restriction of Hazardous Substances (RoHS) Directive


The following standards have been applied to the product(s):

EN 62321-3-1:2014, EN 60335-1:2012+A11:2014+AC:2014+A13:2017+A1:2019+A14:2019+A2:2019+A15:2021+A16:2023, EN 61000-3-3:2013+A1:2019, EN 62321-4:2014/A1:2017, EN 62321-8:2017, EN IEC 55014-1:2021, EN IEC 55014-2:2021, EN 62321-5:2014, EN 62321-6:2015, EN 62233:2008, EN 60675:1995+A1:1998+A2:2018+A11:2019, EN IEC 61000-3-2:2019+A1:2021, EN 62321-1:2013, EN 60335-2-30:2009+A11:2012+A1:2020+A12:2020+A2:2022+A13:2022, EN IEC 62321-2:2021, EN 62321-7-1:2015, EN 62321-7-2:2017, EN 50564:2011

The technical documentation required to demonstrate that the product(s) meet(s) the requirement(s) of the aforementioned legislation has been compiled and is available for inspection by the relevant enforcement authorities.

The UKCA mark was first applied in: 2021

Product Description: Electric Space Heater
Model Number(s): DEVIL 5000PTC
Serial/Batch Number: Refer to product/packaging label
Date of Issue: 28/04/2025

Signed: 
J.A. Clarke
Director

DEVIL 5000PTC UKCA Clarke DOC 042825 Page 1 of 1

CE

Clarke
INTERNATIONAL
Fitzwilliam Hall, Fitzwilliam Place, Dublin 2

DECLARATION OF CONFORMITY

This is an important document and should be retained.

We hereby declare that this product(s) complies with the following legislation:

2009/125/EC Ecodesign Directive
2014/30/EU Electromagnetic Compatibility Directive
2014/35/EU Low Voltage Directive
2011/65/EU Restriction of Hazardous Substances (RoHS) Directive


The following standards have been applied to the product(s):

EN 62321-3-1:2014, EN 60335-1:2012+A11:2014+AC:2014+A13:2017+A1:2019+A14:2019+A2:2019+A15:2021+A16:2023, EN 61000-3-3:2013+A1:2019, EN 62321-4:2014/A1:2017, EN 62321-8:2017, EN IEC 55014-1:2021, EN IEC 55014-2:2021, EN 62321-5:2014, EN 62321-6:2015, EN 62233:2008, EN 60675:1995+A1:1998+A2:2018+A11:2019, EN IEC 61000-3-2:2019+A1:2021, EN 62321-1:2013, EN 60335-2-30:2009+A11:2012+A1:2020+A12:2020+A2:2022+A13:2022, EN IEC 62321-2:2021, EN 62321-7-1:2015, EN 62321-7-2:2017, EN 50564:2011

The technical documentation required to demonstrate that the product(s) meet(s) the requirement(s) of the aforementioned legislation has been compiled and is available for inspection by the relevant enforcement authorities.

The CE mark was first applied in: 2020

Product Description: Electric Space Heater
Model Number(s): DEVIL 5000PTC
Serial/Batch Number: Refer to product/packaging label
Date of Issue: 28/04/2025

Signed: 
J.A. Clarke
Director

DEVIL 5000PTC CE Clarke DOC 042825 Page 1 of 1

A SELECTION FROM THE VAST RANGE OF

Clarke®

QUALITY PRODUCTS



AIR COMPRESSORS

From DIY to industrial, Plus air tools, spray guns and accessories.

GENERATORS

Prime duty or emergency standby for business, home and leisure.

POWER WASHERS

Hot and cold, electric and engine driven - we have what you need

WELDERS

Mig, Arc, Tig and Spot. From DIY to auto/industrial.

METALWORKING

Drills, grinders and saws for DIY and professional use.

WOODWORKING

Saws, sanders, lathes, mortisers and dust extraction.

HYDRAULICS

Cranes, body repair kits, transmission jacks for all types of workshop use.

WATER PUMPS

Submersible, electric and engine driven for DIY, agriculture and industry.

POWERTOOLS

Angle grinders, cordless drill sets, saws and sanders.

STARTERS/CHARGERS

All sizes for car and commercial use.

PARTS & SERVICE: 0208 988 7400

Parts Enquiries
Parts@clarkeinternational.com

Servicing & Technical Enquiries
Service@clarkeinternational.com

SALES: UK 01992 565333 or Export 00 44 (0)1992 565335

Clarke INTERNATIONAL Hemnall Street, Epping, Essex CM16 4LG
www.clarkeinternational.com